

STEAM TRAPS  
BOILER LEVEL  
INSTRUMENTATION  
STEAM REGULATORS  
PRESSURE RELIEF VALVES  
BOILER TRIM VALVES  
ISOLATION VALVES  
STEAM RELIABILITY  
DESUPERHEATING  
STEAM CONDITIONING


# Steam Solutions

RELIABLE SOLUTIONS FOR ALL AREAS  
IN THE STEAM SYSTEM

 **PROCONEX**

Emerson Impact Partner



A detailed view of an industrial steam system. The image shows a dense network of large, polished metal pipes, some of which are wrapped in insulation. The pipes are interconnected with various valves, flanges, and machinery. The lighting is dramatic, with strong highlights and deep shadows, creating a sense of depth and complexity. The overall color palette is dominated by metallic greys and blues, with some warmer tones from the steam or lighting.

**Steam  
is the  
lifeblood  
of your  
process**



➤ **DID YOU KNOW**

**Between 15% and 30%  
of steam traps will  
fail outright**

U.S. Department of Energy, Energy Efficiency and Renewable Energy, 2004

Often an overlooked and neglected utility, the steam system holds the key to improved equipment reliability, improved process efficiency, safety, reduced energy costs, reduced emissions, and ultimately increased profitability.

Proconex combines our steam experts and Emerson's wide product portfolio to evaluate your plant in the decarbonization process and reaching your sustainable carbon emissions goals.

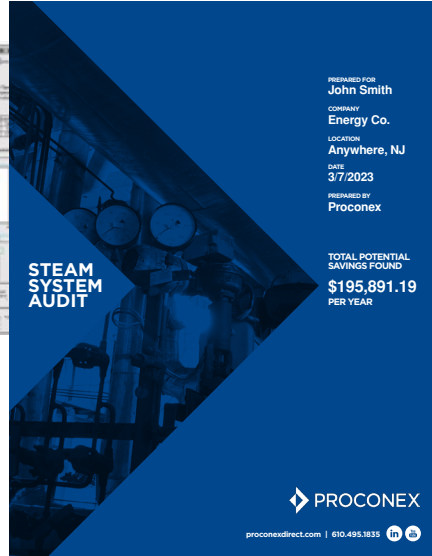
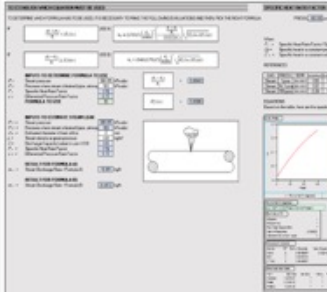
**Let us help you unlock the potential of your steam system.**

➤ **PROCONEX**

Emerson Impact Partner



# Services that Optimize Operations and Energy Efficiency



SCAN QR CODE  
TO SCHEDULE YOUR  
STEAM AUDIT TODAY



## System Auditing

Steam is the lifeblood of your process. Proconex combines our steam experts, wide product portfolio, local service, and a consultative approach to evaluate your plant. Through our steam audit you can see improved equipment reliability, improved process efficiency, reduced energy costs, reduced emissions, and ultimately increased profitability.

- Entire steam system inspection
- Steam trap testing
- Drip leg designs
- Condensate return lines
- Control valves, regulators, isolation valves, and pressure relief valves
- Leaks in joints, steam piping, and equipment
- Detailed reporting of all findings and recommendations

## Steam Trap Monitoring

Unlike manual inspections, steam trap monitoring will allow you to see a holistic view of your steam system through continuously collecting data. This can allow you to analyze the data constantly and keep your steam system functioning efficiently always.

Proconex takes care of everything: set up, installation, continuous monitoring—even steam trap repairs or replacements will be handled through your service contract. The entire process is completely hands-off for you and your staff.

- Nonstop data collection and upload
- Professional analysis and reporting
- Prompt mitigation
- Continued process improvement
- Detects leaks and water build up in steam system through steam traps
- Detailed reporting of all findings and recommendations



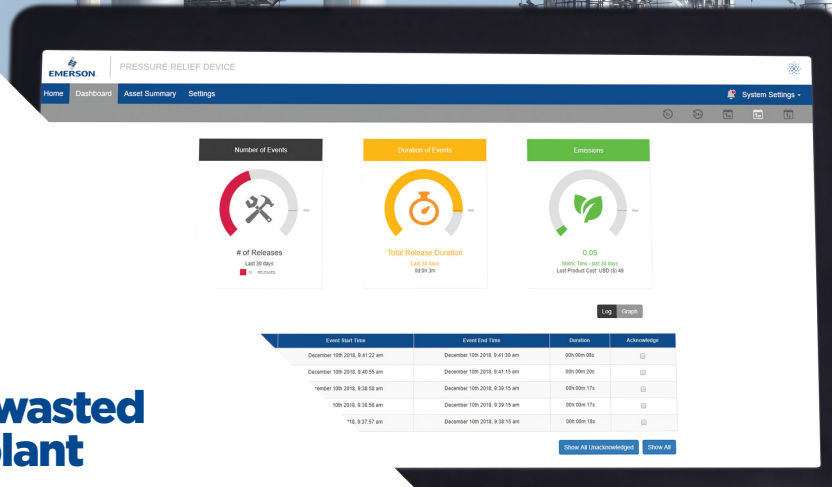
## Pressure Relief Valve Monitoring

Operational inefficiencies lead to product losses and potential increases in fugitive emissions. Through wireless monitoring of pressure relief valves, we can help you detect relief events and leaks that may go unnoticed. Monitoring can also allow for preventative maintenance, keeping facilities running efficiently.

- Regulatory Compliance
- Safety
- Reliability
- Cost Reduction

**DID YOU KNOW**  
**32%** of energy is wasted in a typical plant

U.S. Department of Energy, Energy Efficiency and Renewable Energy, 2004



## Level Gauge Program

The safety and reliability of your boilers, tanks, and vessels level indication equipment are extremely vital to your plant to ensure liquid/steam levels are correct. Our service shop, Atlantic Valve Services, has professional trained technicians to build and repair your level gauges.

- Penberthy medium pressure reflex & transparent level gauges
- In stock spare parts for your MRO needs
- Boiler, Tank, and Vessel Walk-downs
- Fast turnaround times for new assemblies
- Hydro testing
- Repair capabilities of all makes/models of level indication such as color ports, steam gauges, high pressure, and low pressure

**PROCONEX**

Emerson Impact Partner



# Broad Portfolio of Reliable Steam Solutions



## Steam Traps

Yarway™ steam traps have a strong reputation for reliable operation and are suitable for a wide range of applications. Our Yarway steam traps offer in-line repairable solutions for easy replacement. Our experts can conduct steam trap surveys or implement our wireless steam trap monitoring solution to ensure proper steam trap operation and minimize steam loss.

- Yarway Mechanical Steam Traps
- Yarway Thermostatic Steam Traps
- Yarway Thermodynamic Steam Traps
- Yarway Sanitary Steam Traps
- Yarway Wye Strainers



## Boiler Level Instrumentation

Various solutions are available that meet the ASME requirements for direct or remote indication of boiler water level. Penberthy™ and Yarway level gauges are available for low, medium and high-pressure applications. Our portfolio of direct level indication solutions includes the Yarway Color-Port Level Gauge which has a maximum pressure rating of 3000 psig. Our Yarway electronic level solutions are suitable for remote indication of the boiler water level.

- Penberthy Transparent Glass Gauges
- Penberthy Reflex Glass Gauges
- Yarway Color Port Gauges
- Yarway Conductivity Probe System
- Magnetic Level System
- Penberthy Tubular Gauges
- Penberthy Gauge Cocks



## Pressure Reduction

Fisher offers self-operated and pilot-operated regulators for a variety of steam pressure reducing applications. These models can withstand dirty service and high cycle applications while maintaining accuracy and stability over their flow range.

- Fisher Direct Operated Steam Regulators
- Fisher Pilot Operated Steam Regulators
- Fisher Ball Valves
- Fisher Globe Valves



## Noise Attenuation

The WhisperTube is a passive reactive silencer designed for installation downstream of the control valve or other equipment contributing to system noise. Requiring negligible pressure drop across the device, the WhisperTube achieves system noise reduction across a wide range of conditions without impacting the flow capacity or process.

- Fisher Noise Attenuation





## Pressure Relief Valves

The Crosby and Anderson Greenwood brands provide high quality and comprehensive overpressure protection for Section I and Section VIII applications. Threaded, conventional, balanced, and pilot operated models are available to handle every application within the steam system.

- Crosby Section 1 Direct Spring Relief Valve
- Crosby Section 8 Direct Spring Relief Valve
- Anderson Greenwood Section 8 Pilot-Operated Relief Valve



## Boiler Trim Valves

Yarway valves use special geometries and materials and in-line repair-ability to provide superior performance in the severe service applications of boiler blowdown.

- Yarway Surface Blowdown Valves
- Yarway Bottom Blowdown Valves
- Fisher Surface Blowdown Valves



## Isolation Valves

Isolation valves can withstand heavy use and are extremely durable. They have a robust design, and easily replaceable seal rings. With electric and pneumatic actuation, the valve can be configured to your exact needs.

- Yarway Globe Valves
- KTM Ball Valves
- Vanessa Butterfly Valves and more



## Steam Conditioning & Desuperheating

Steam conditioning valves control steam pressure and temperature by combining both functions within one integral control unit. These valves address the need for better control of steam conditions brought on by increased energy costs and more rigorous plant operation. Steam conditioning valves also provide better temperature control, improved noise abatement, and require fewer piping and installation restrictions than the equivalent desuperheater.

- Fisher Insertion Desuperheaters
- Fisher Ring Desuperheaters
- Fisher Steam Conditioning Valves



### DID YOU KNOW

Plants that assess their steam systems can uncover cost savings of **15%**

U.S. Department of Energy, Energy Efficiency and Renewable Energy, 2006



Emerson Impact Partner





# Start building your integrated view of plant performance

Let Proconex introduce expertise throughout your plant. Steam Trap Monitoring Service is part of a broad line of fully integrated reliability and performance monitoring services, delivered through innovative Emerson Pervasive Sensing™ technologies.

**Let's find solutions today. Together.**



Emerson Impact Partner

[proconexdirect.com](http://proconexdirect.com) | 610.495.1835

